

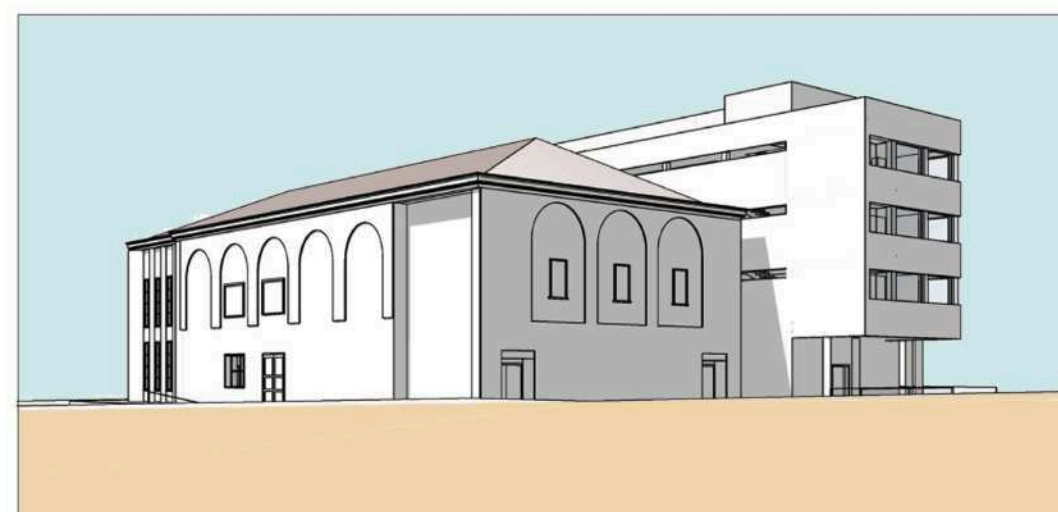
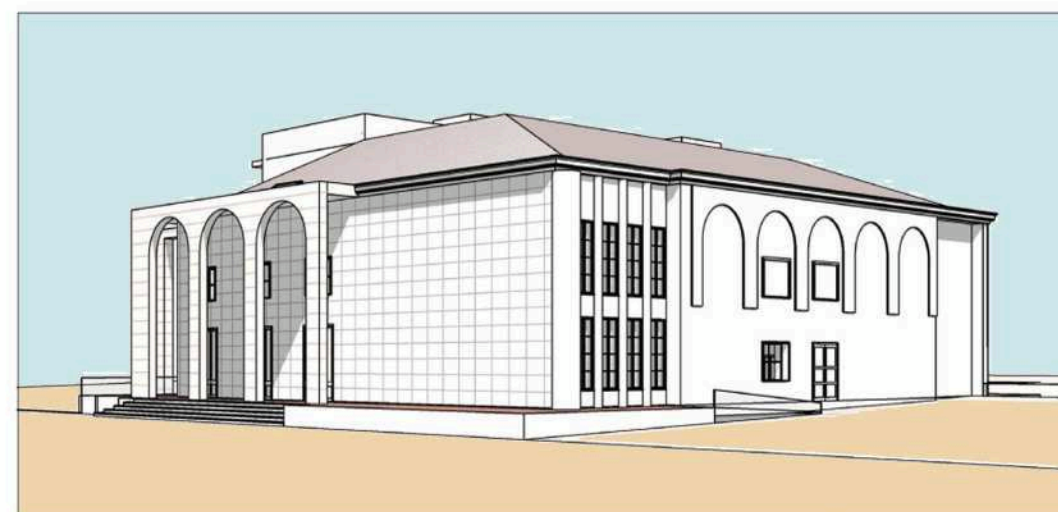


Gruppo **Tironi**

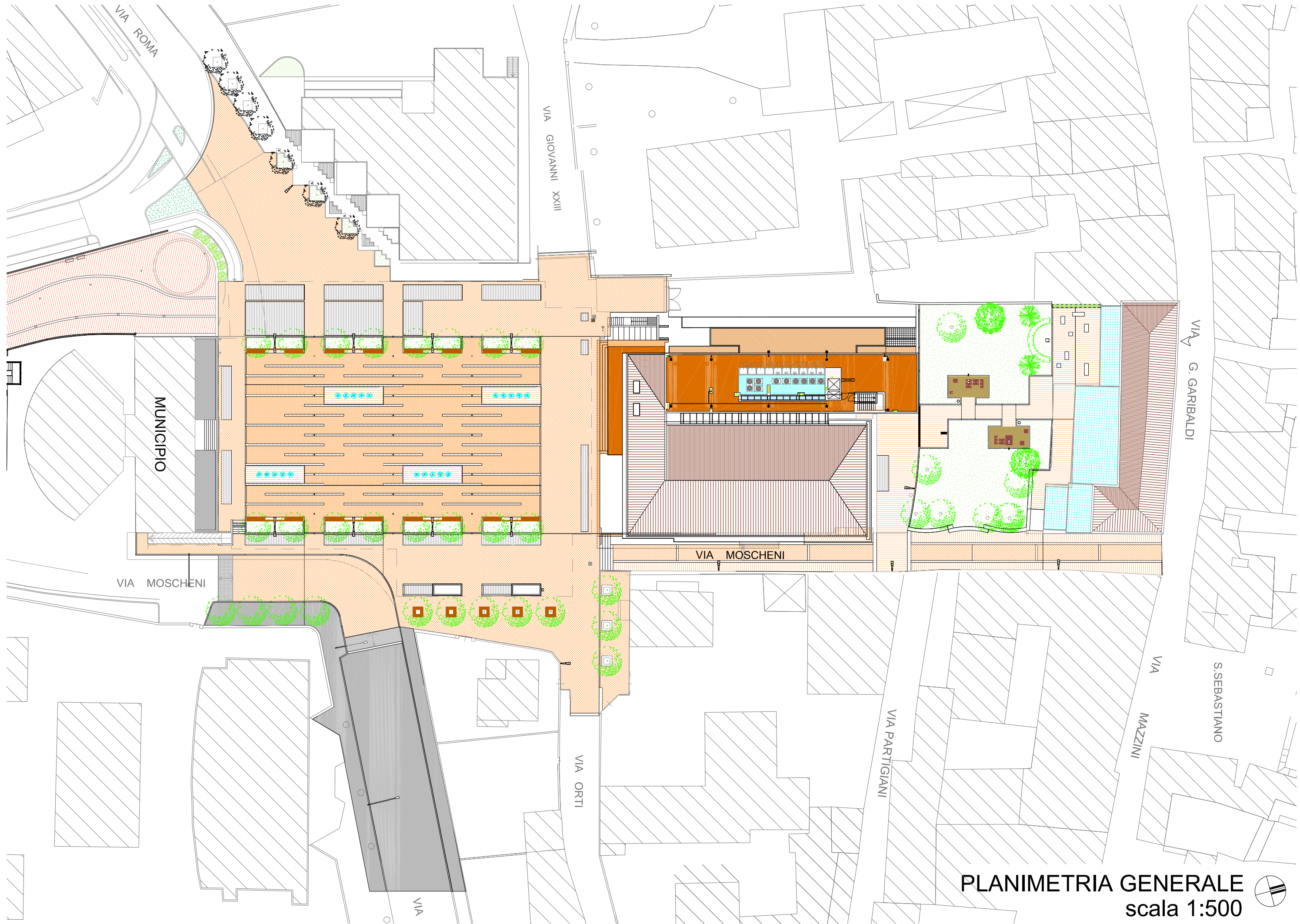
*Garanzia di qualità
e professionalità*

NEMBRO "BALILLA"

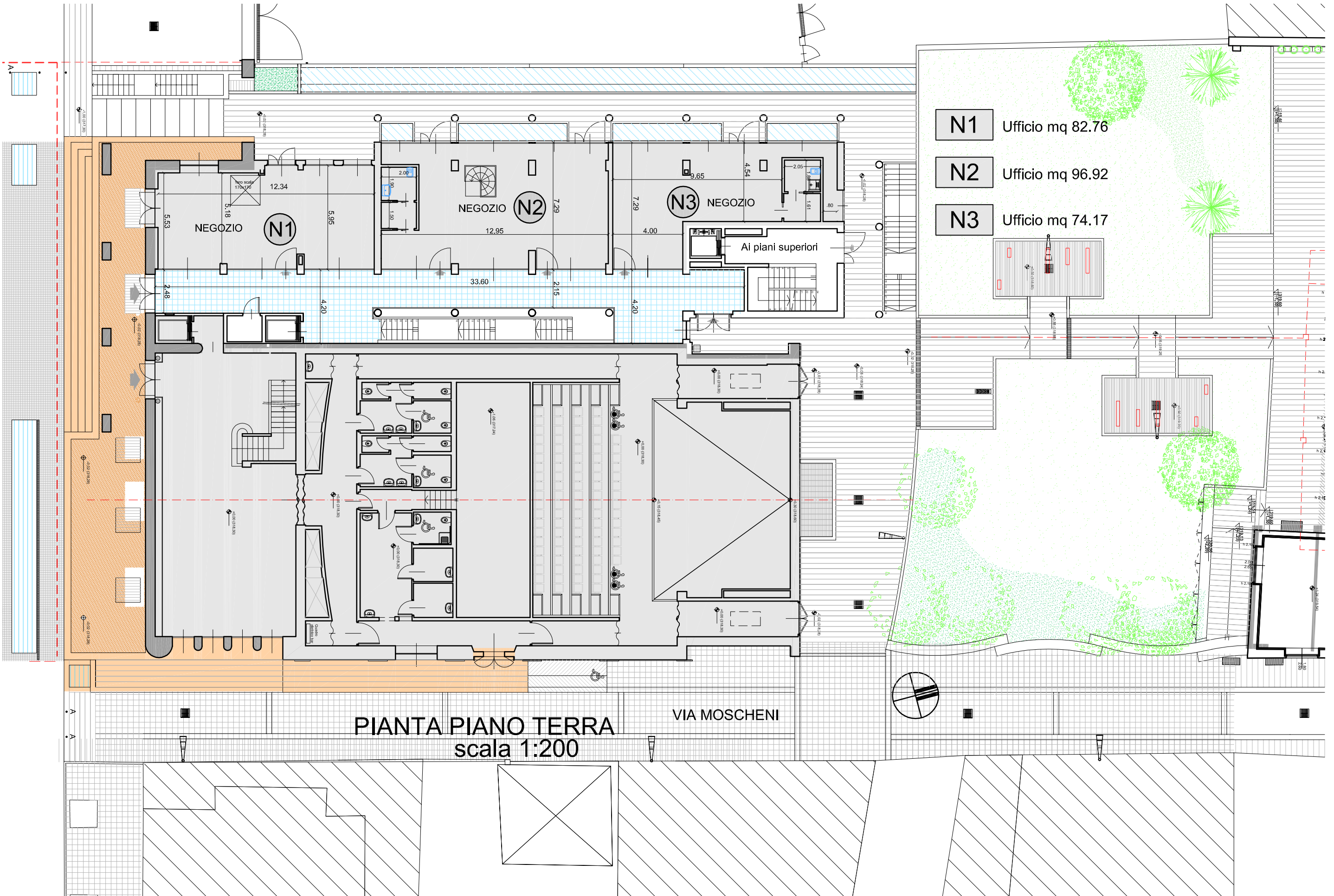
Nembro, P.zza Liberta', Via Moscheni



Tel: 035.512202 • www.gruppotironi.com



PLANIMETRIA GENERALE
scala 1:500



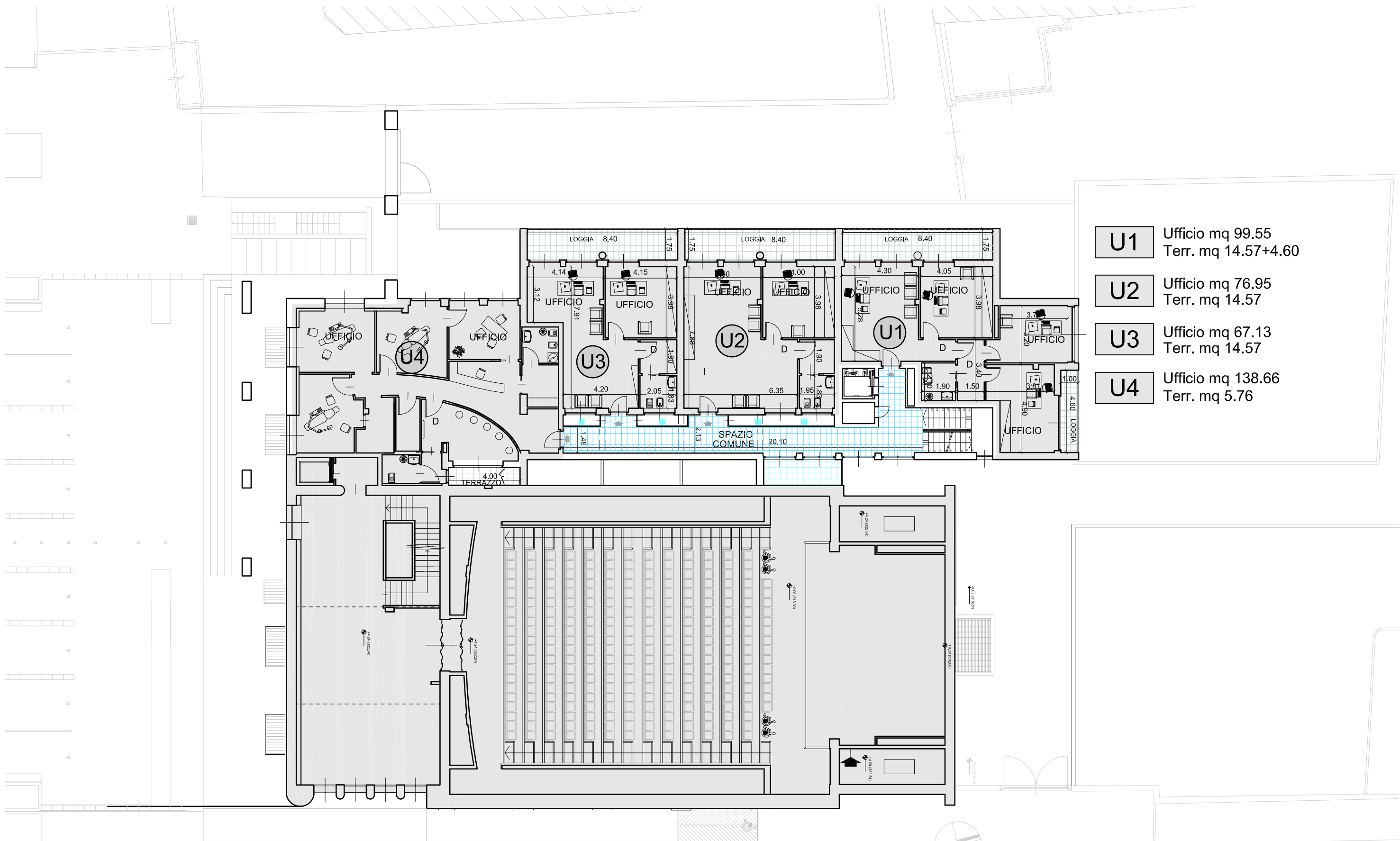
N1 Ufficio mq 82.76

N2 Ufficio mq 96.92

N3 Ufficio mq 74.17

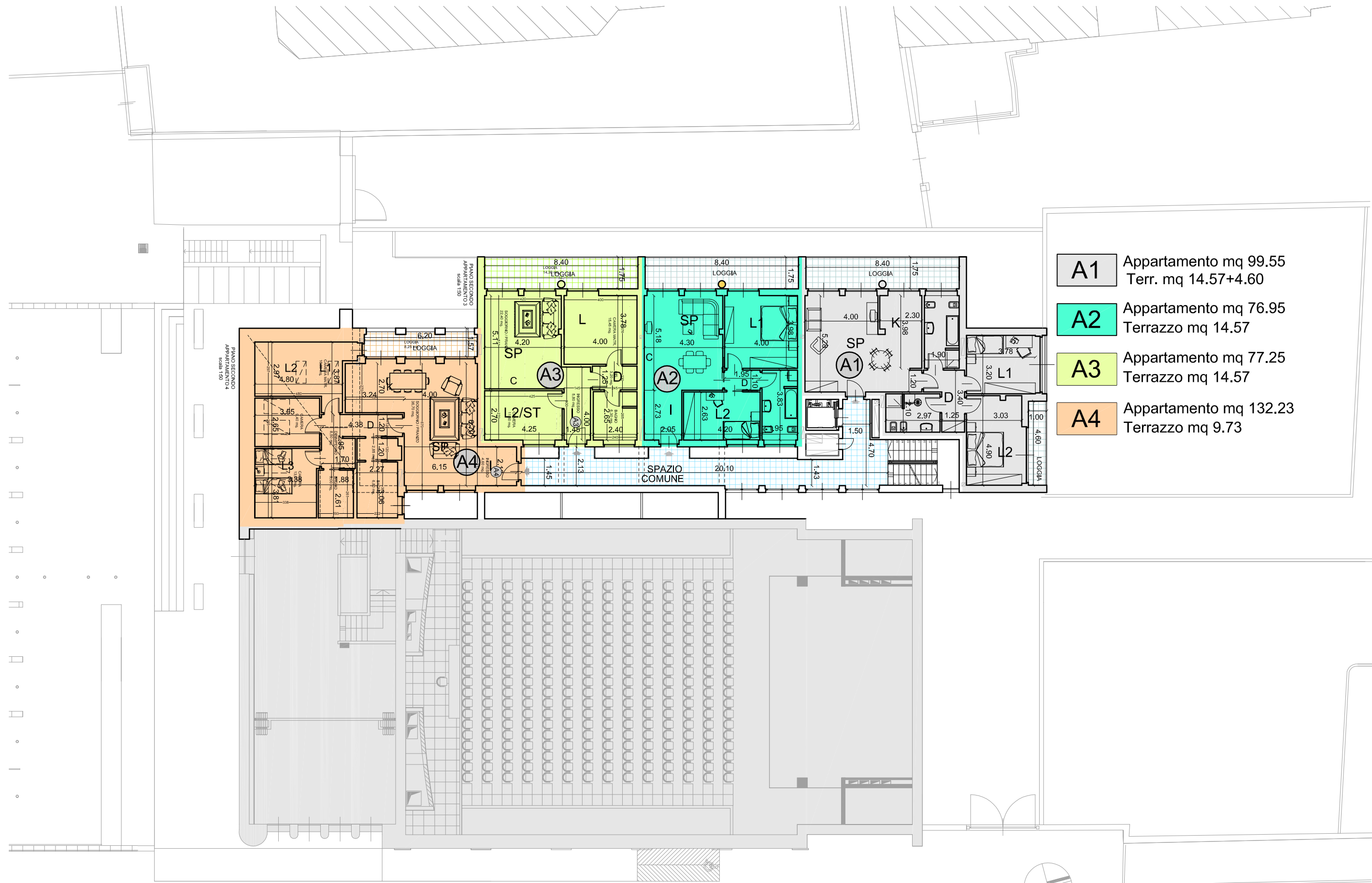
PIANTA PIANO TERRA
scala 1:200

VIA MOSCHENI



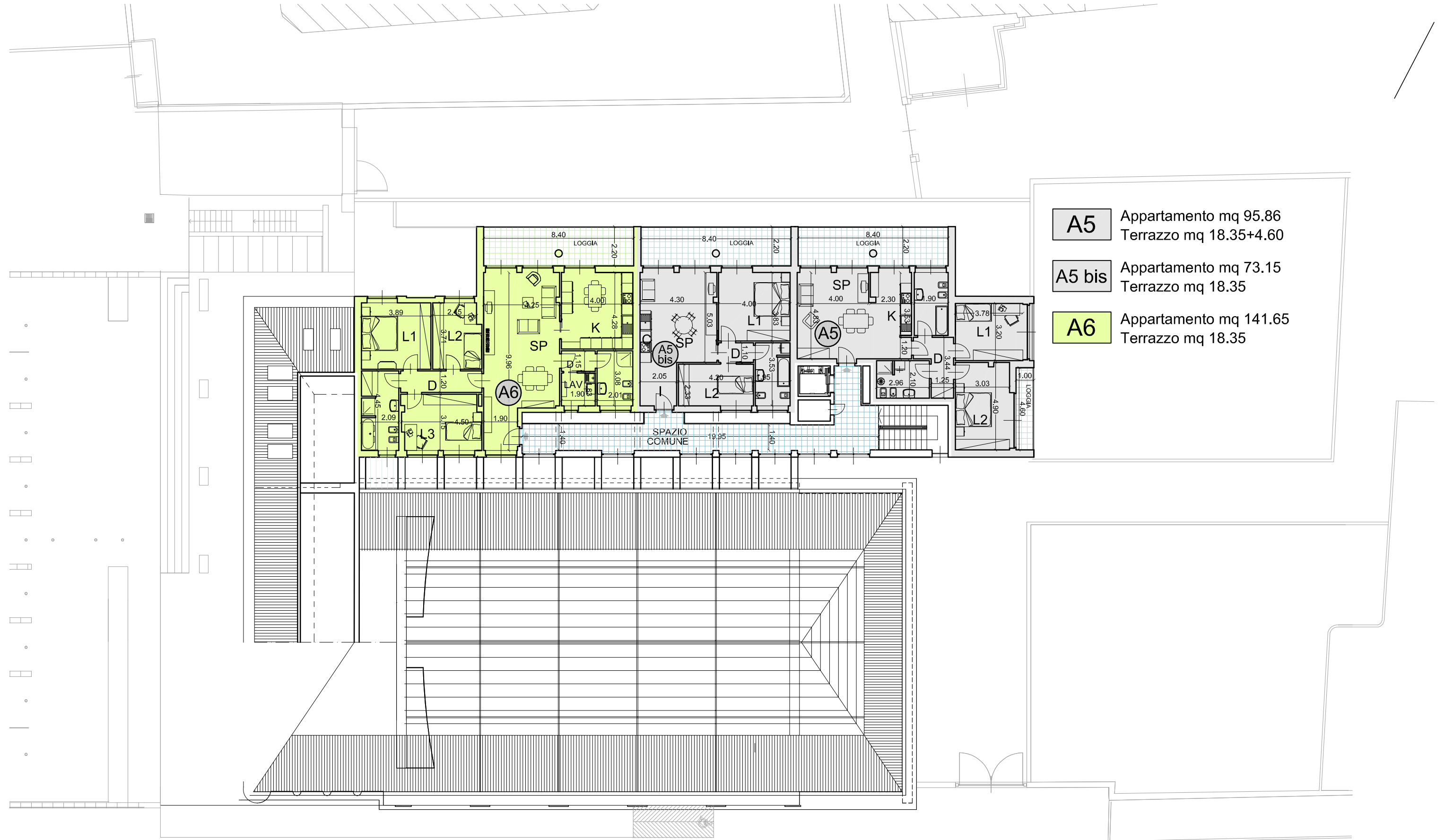
- U1** Ufficio mq 99.55
Terr. mq 14.57+4.60
- U2** Ufficio mq 76.95
Terr. mq 14.57
- U3** Ufficio mq 67.13
Terr. mq 14.57
- U4** Ufficio mq 138.66
Terr. mq 5.76

PIANTA PIANO PRIMO
scala 1:200



- A1** Appartamento mq 99.55
Terr. mq 14.57+4.60
- A2** Appartamento mq 76.95
Terrazzo mq 14.57
- A3** Appartamento mq 77.25
Terrazzo mq 14.57
- A4** Appartamento mq 132.23
Terrazzo mq 9.73

PIANTA PIANO SECONDO
scala 1:200

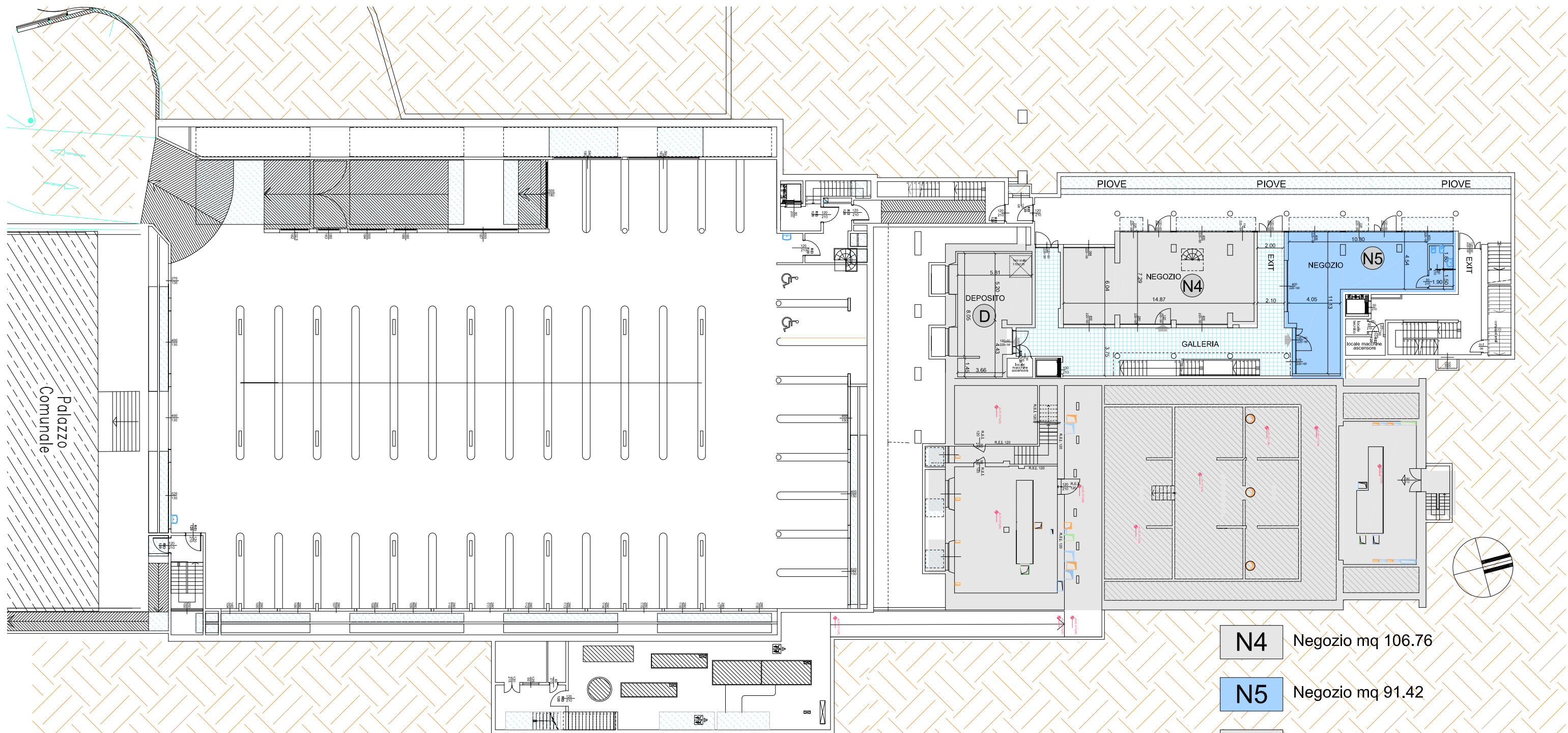


A5 Appartamento mq 95.86
Terrazzo mq 18.35+4.60

A5 bis Appartamento mq 73.15
Terrazzo mq 18.35

A6 Appartamento mq 141.65
Terrazzo mq 18.35

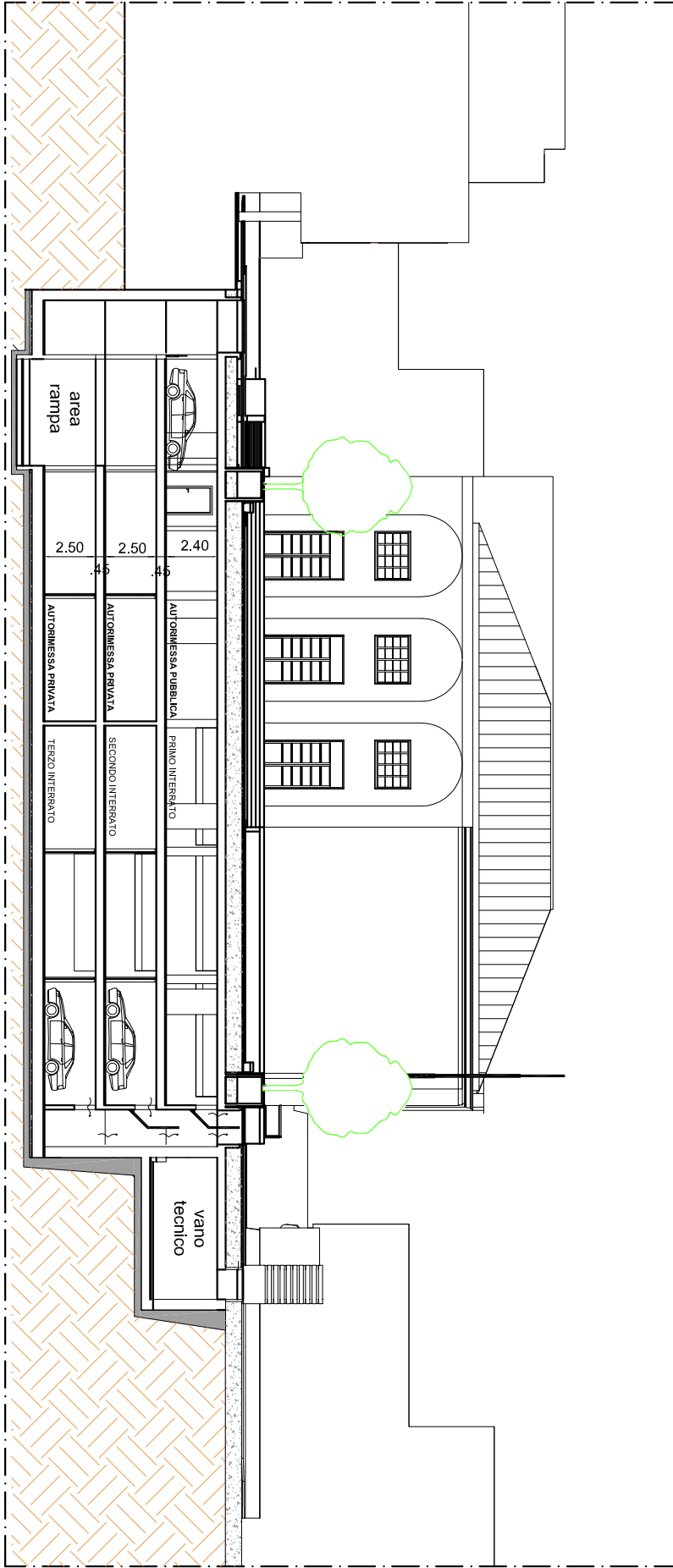
PIANTA PIANO TERZO
scala 1:200



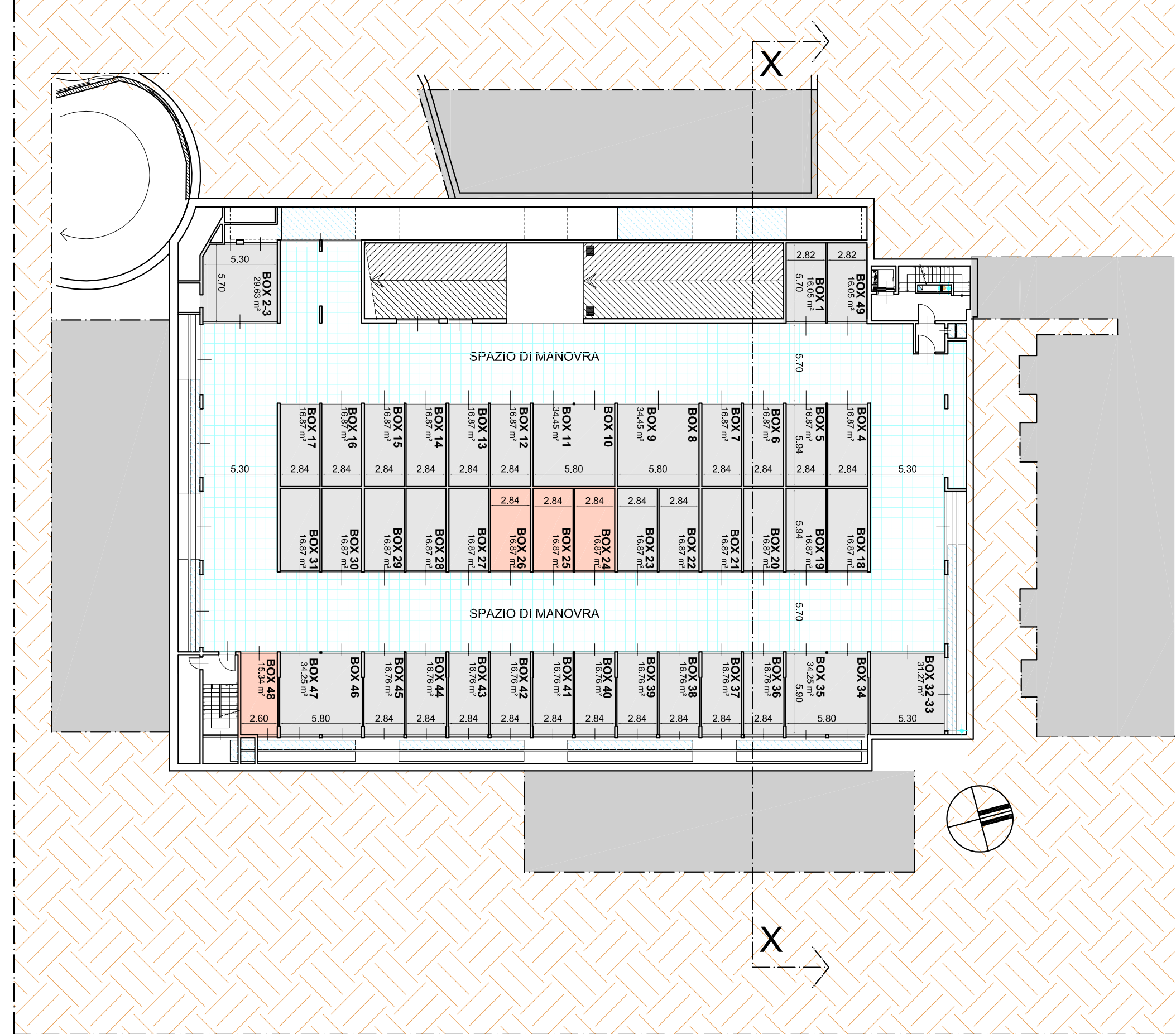
PIANTA PRIMO PIANO INTERRATO
scala 1:300

- N4** Negozio mq 106.76
- N5** Negozio mq 91.42
- D** Deposito mq 64.35

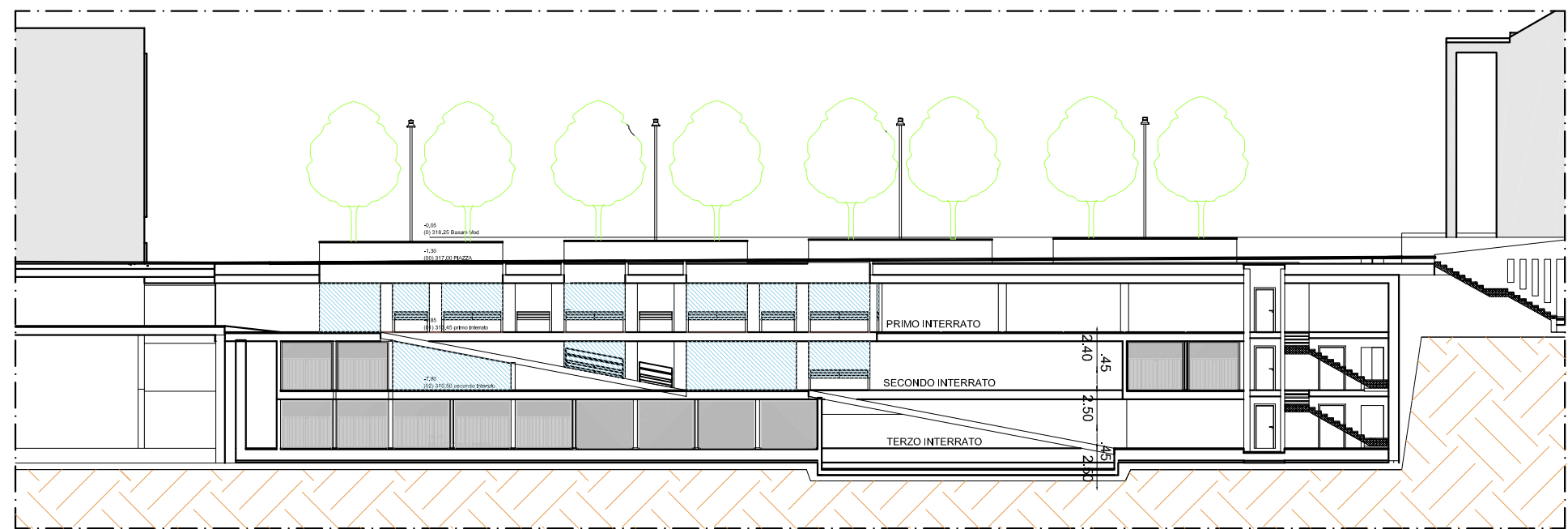
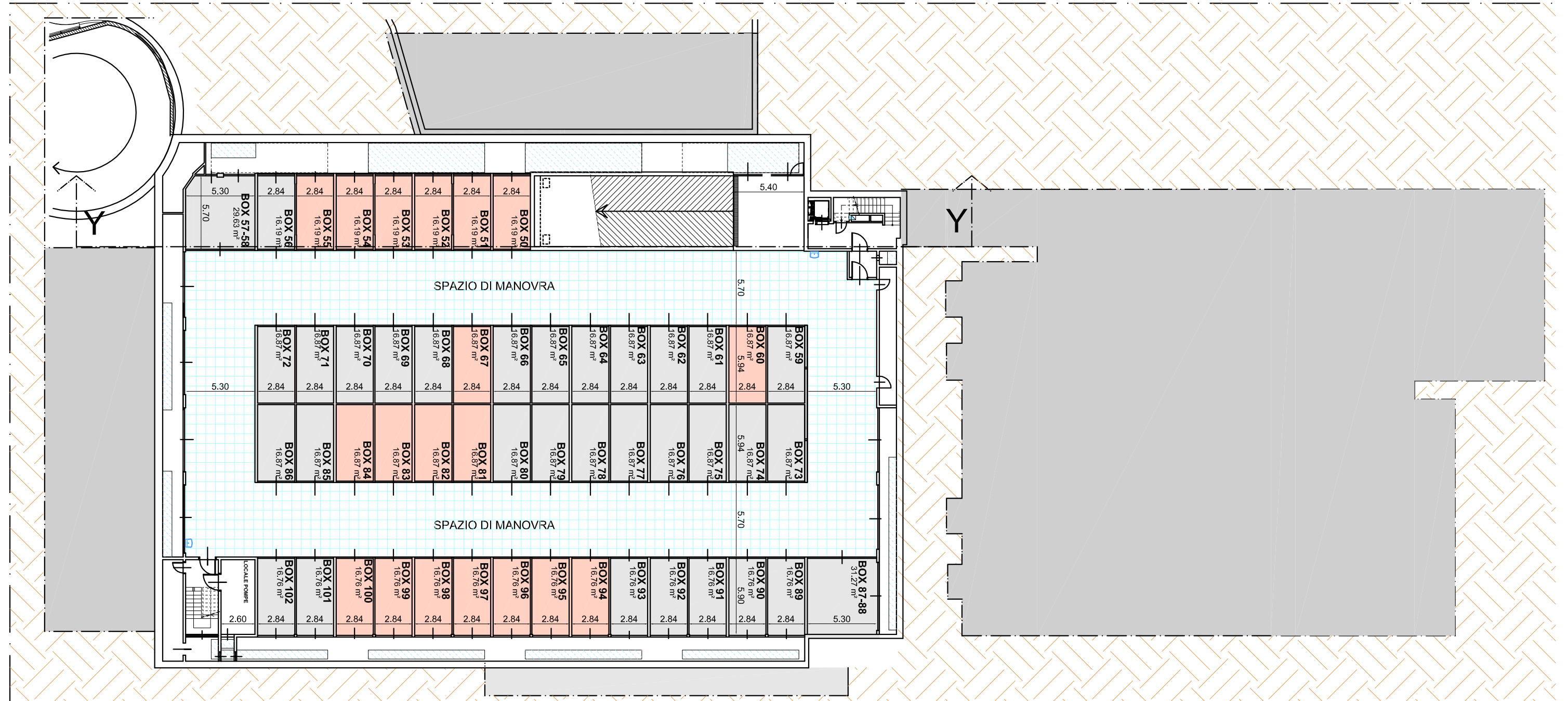
SEZIONE X-X scala 1:300



SECONDO PIANO INTERRATO scala 1:300



TERZO PIANO INTERRATO scala 1:300



SEZIONE Y-Y scala 1:300

